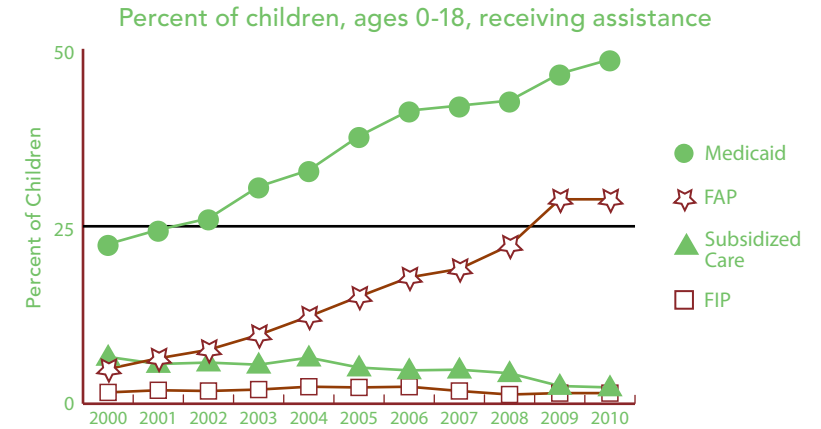


BACKGROUND INFORMATION (ALL DATA ARE FOR 2010 UNLESS OTHERWISE NOTED.)



	NUMBER	RATE	MI
FAMILY SUPPORT PROGRAMS			
Children receiving...			
• subsidized child care, ages 0–12 ¹	76	2.3%	3.4%
• FIP cash assistance ^{1,3}	79	1.5%	6.2%
• Food Assistance Program ^{1,4}	1,519	28.8%	30.4%
Children with support owed			
• receiving none (% of those owed)	104	9.2%	29.5%
• receiving less than 70% of amount	530	47.1%	62.6%



Source: Michigan Department of Human Services and Michigan Department of Community Health, Vital Records and Health Data Development Section.



	2000	2010	% CHANGE
POPULATION			
Child population			
0–17	5,666	4,964	-12.4%
• Ages 0-4	1,329	1,155	-13.1%
• Ages 5-9	1,558	1,387	-11.0%
• Ages 10-14	1,759	1,444	-17.9%
• Ages 15-19	1,519	1,417	-6.7%

	NUMBER	RATE	MI
ACCESS TO HEALTH CARE			
Children insured	4,875	94.1%	94.9%
Children, ages 0–18 insured by...			
• Medicaid ¹	2,553	48.5%	40.7%
• MICHild	127	2.4%	1.2%
Fully immunized toddlers, ages 19–35 months (for the series 4:3:1:3:3:1) ¹	236	78.1%	70.0%
Lead poisoning in children, ages 1–2			
• tested	171	35.7%	36.2%
• poisoned (% of tested)	0	*	0.8%
Children, ages 1–14, hospitalized for asthma (rate per 10,000) ²	4	*	20.8
CHILDREN WITH SPECIAL NEEDS			
Babies with a birth defect**	12	5.0%	6.6%
Students in Special Education ¹	451	11.7%	14.4%
Children receiving Supplemental Security Income (rate per 1,000) ¹	103	20.7	19.2

¹ As of December 2010.

² Annual rate and number are based on the three-year period 2007–2009 and only for counties with a total number over 20.

³ Family Independence Program.

⁴ State name for the federal Supplemental Nutrition Assistance Program, formerly called "food stamps."

Note: Percentages reflect percent of population unless otherwise noted.

* Sometimes a rate could not be calculated because of low incidence of events or unavailable data.

** Based on three year period 2006-2008.

N/A not available.

See Data Notes and Definitions for details.



TRENDS IN CHILD WELL-BEING 2000–2008/09**

	BASE YEAR		CURRENT YEAR		RANK ¹	MI RATE	PERCENT CHANGE IN RATE	
	NUMBER	RATE	NUMBER	RATE			WORSE	BETTER
Economic Security**	<u>2005</u>		<u>2009</u>					
Children in poverty								
• ages 0–17	876	16.9%	1,251	25.6%	54	22.2%	52	
• ages 5–17	590	14.8%	846	22.9%	55	20.2%	55	
	<u>2006</u>		<u>2010</u>					
Students receiving free/reduced price school lunches ²	1,731	40.1%	1,943	50.3%	35	46.5%	26	
Child Health	<u>1998–2000</u>		<u>2007–2009</u>					
Less than adequate prenatal care (2008–09)‡	—	—	68	31.2%	43	29.5%		
Low-birthweight babies	14	5.8%	20	8.9%	73 of 81	8.5%	53	
Infant mortality (per 1,000)	1	*	2	*	* of 49	7.6		
Child deaths, ages 1–14 (per 100,000)	0	*	1	*	* of 34	17.4		
Adolescence								
Births to teens, ages 15–19 (per 1,000)	36	52.8	25	34.6	44	33.3		35
Teen deaths (per 100,000)	0	*	1	*	* of 39	55.6		
	<u>2007</u>		<u>2010</u>					
High school dropouts**	40	10.8%	20	6.0%	18 of 80	11.1%		45
Abuse/Neglect (per 1,000)	<u>FY2000</u>		<u>FY2010</u>					
Children in investigated families	860	152.7	561	112.5	69	70.1		26
Confirmed victims	110	19.5	108	21.7	57	13.8	11	
Children in out-of-home care	35	6.2	18	3.6	20 of 76	5.1		42
Education (not proficient in math)	<u>2003</u>		<u>2010</u>					
Fourth grade (MEAP)	106	32.7%	7	2.6%	1	8.5%		92
Eighth grade (MEAP)	168	47.1%	54	18.2%	30	22.0%		61
	<u>2008</u>		<u>2010</u>					
High school students (MME)	150	52.4%	135	48.6%	41	49.6%		7

¹ A ranking of 1 means a county has the “best” rate compared to other counties in the state. Unless noted, the ranking is based on 82–83 counties.

² Family income for eligible students is below 185 percent poverty level.

* Sometimes a rate could not be calculated because of low incidence of events or unavailable data.

** Due to changes in the data measures, comparisons between 2000 and the current year could not be made for some indicators.

‡ Due to Michigan’s revised birth certificate, 2008–09 data cannot be compared with those of previous years.

MME – Michigan Merit Exam instead of the MEAP.

Beginning in 2007 Michigan high school students have taken the ACT college entrance exam.

Missing bars indicate no change or a rate could not be calculated; a “0” reflects no change. Percentage change is calculated with unrounded rates.

2009

Live Births
222
Median Household Income
\$40,198

2010

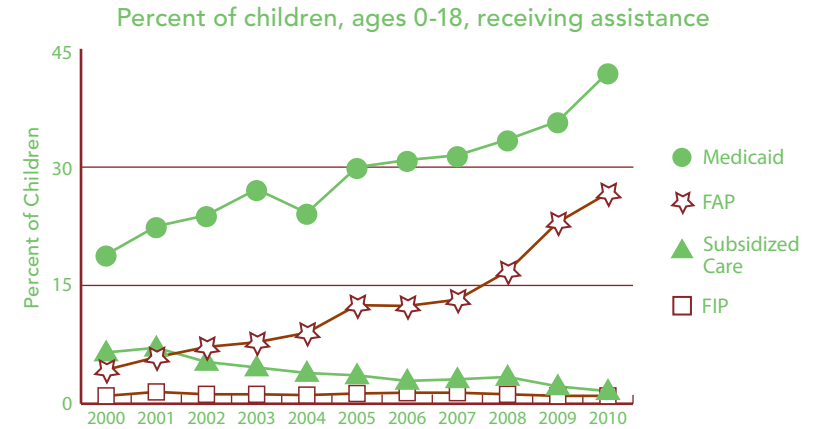
Total Population
23,580
Unemployment Rate
15.4%

CHARLEVOIX

BACKGROUND INFORMATION (ALL DATA ARE FOR 2010 UNLESS OTHERWISE NOTED.)



	NUMBER	RATE	MI
FAMILY SUPPORT PROGRAMS			
Children receiving...			
• subsidized child care, ages 0–12 ¹	62	1.6%	3.4%
• FIP cash assistance ^{1,3}	57	1.0%	6.2%
• Food Assistance Program ^{1,4}	1,601	26.7%	30.4%
Children with support owed			
• receiving none (% of those owed)	268	21.5%	29.5%
• receiving less than 70% of amount	707	56.8%	62.6%



Source: Michigan Department of Human Services and Michigan Department of Community Health, Vital Records and Health Data Development Section.

	2000	2010	% CHANGE
POPULATION			
Child population			
0–17	6,763	5,716	-15.5%
• Ages 0-4	1,690	1,363	-19.3%
• Ages 5-9	1,833	1,552	-15.3%
• Ages 10-14	2,034	1,745	-14.2%
• Ages 15-19	1,763	1,575	-10.7%

	NUMBER	RATE	MI
ACCESS TO HEALTH CARE			
Children insured	5,512	93.8%	94.9%
Children, ages 0–18 insured by...			
• Medicaid ¹	2,514	42.0%	40.7%
• MICHild	126	2.1%	1.2%
Fully immunized toddlers, ages 19–35 months (for the series 4:3:1:3:3:1) ¹	295	78.7%	70.0%
Lead poisoning in children, ages 1–2			
• tested	148	26.3%	36.2%
• poisoned (% of tested)	1	*	0.8%
Children, ages 1–14, hospitalized for asthma (rate per 10,000) ²	5	*	20.8
CHILDREN WITH SPECIAL NEEDS			
Babies with a birth defect**	16	5.9%	6.6%
Students in Special Education ¹	742	17.8%	14.4%
Children receiving Supplemental Security Income (rate per 1,000) ¹	95	16.7	19.2

¹ As of December 2010.

² Annual rate and number are based on the three-year period 2007–2009 and only for counties with a total number over 20.

³ Family Independence Program.

⁴ State name for the federal Supplemental Nutrition Assistance Program, formerly called "food stamps."

Note: Percentages reflect percent of population unless otherwise noted.

* Sometimes a rate could not be calculated because of low incidence of events or unavailable data.

** Based on three year period 2006-2008.

N/A not available.

See Data Notes and Definitions for details.



TRENDS IN CHILD WELL-BEING 2000–2008/09**

	BASE YEAR		CURRENT YEAR		RANK ¹	MI RATE	PERCENT CHANGE IN RATE	
	NUMBER	RATE	NUMBER	RATE			WORSE	BETTER
Economic Security**	<u>2005</u>		<u>2009</u>					
Children in poverty								
• ages 0–17	1,020	16.4%	1,088	19.5%	22	22.2%	19	
• ages 5–17	663	14.0%	687	16.4%	22	20.2%	17	
	<u>2006</u>		<u>2010</u>					
Students receiving free/reduced price school lunches ²	1,450	31.8%	1,983	47.7%	29	46.5%	50	
Child Health	<u>1998–2000</u>		<u>2007–2009</u>					
Less than adequate prenatal care (2008–09)‡	—	—	64	26.7%	29	29.5%		
Low-birthweight babies	17	5.4%	16	6.3%	13 of 81	8.5%	17	
Infant mortality (per 1,000)	2	*	2	*	* of 49	7.6		
Child deaths, ages 1–14 (per 100,000)	2	38.3	1	*	* of 34	17.4		
Adolescence								
Births to teens, ages 15–19 (per 1,000)	30	37.1	20	24.6	22	33.3		34
Teen deaths (per 100,000)	2	116.6	1	*	* of 39	55.6		
	<u>2007</u>		<u>2010</u>					
High school dropouts**	34	8.5%	33	9.0%	47 of 80	11.1%	5	
Abuse/Neglect (per 1,000)	<u>FY2000</u>		<u>FY2010</u>					
Children in investigated families	521	77.0	520	91.6	45	70.1	19	
Confirmed victims	47	6.9	79	13.9	30	13.8	100	
Children in out-of-home care	20	3.0	14	2.5	8 of 76	5.1		17
Education (not proficient in math)	<u>2003</u>		<u>2010</u>					
Fourth grade (MEAP)	86	27.0%	12	4.7%	9	8.5%		83
Eighth grade (MEAP)	141	39.4%	53	17.5%	27	22.0%		55
	<u>2008</u>		<u>2010</u>					
High school students (MME)	161	45.2%	111	38.5%	7	49.6%		15

¹ A ranking of 1 means a county has the “best” rate compared to other counties in the state. Unless noted, the ranking is based on 82–83 counties.

² Family income for eligible students is below 185 percent poverty level.

* Sometimes a rate could not be calculated because of low incidence of events or unavailable data.

** Due to changes in the data measures, comparisons between 2000 and the current year could not be made for some indicators.

‡ Due to Michigan’s revised birth certificate, 2008–09 data cannot be compared with those of previous years.

MME – Michigan Merit Exam instead of the MEAP.

Beginning in 2007 Michigan high school students have taken the ACT college entrance exam.

Missing bars indicate no change or a rate could not be calculated; a “0” reflects no change. Percentage change is calculated with unrounded rates.

2009

Live Births
231
Median Household Income
\$43,368

2010

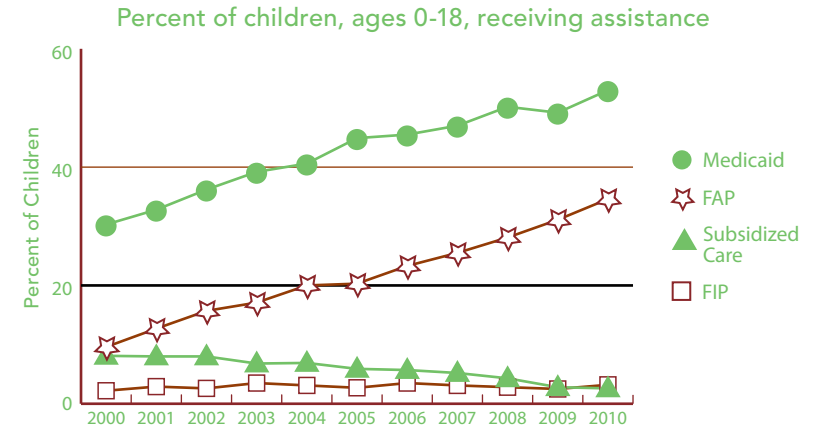
Total Population
25,949
Unemployment Rate
14.4%

CHEBOYGAN

BACKGROUND INFORMATION (ALL DATA ARE FOR 2010 UNLESS OTHERWISE NOTED.)



	NUMBER	RATE	MI
FAMILY SUPPORT PROGRAMS			
Children receiving...			
• subsidized child care, ages 0–12 ¹	92	2.6%	3.4%
• FIP cash assistance ^{1,3}	179	3.2%	6.2%
• Food Assistance Program ^{1,4}	1,939	34.6%	30.4%
Children with support owed			
• receiving none (% of those owed)	250	18.2%	29.5%
• receiving less than 70% of amount	791	57.6%	62.6%



Source: Michigan Department of Human Services and Michigan Department of Community Health, Vital Records and Health Data Development Section.

	2000	2010	% CHANGE
POPULATION			
Child population 0–17			
• Ages 0-4	1,559	1,229	-21.2%
• Ages 5-9	1,694	1,439	-15.1%
• Ages 10-14	1,834	1,577	-14.0%
• Ages 15-19	1,736	1,624	-6.5%

	NUMBER	RATE	MI
ACCESS TO HEALTH CARE			
Children insured	5,203	93.9%	94.9%
Children, ages 0–18 insured by...			
• Medicaid ¹	2,970	53.0%	40.7%
• MICHild	140	2.5%	1.2%
Fully immunized toddlers, ages 19–35 months (for the series 4:3:1:3:3:1) ¹	197	66.3%	70.0%
Lead poisoning in children, ages 1–2			
• tested	174	34.4%	36.2%
• poisoned (% of tested)	1	*	0.8%
Children, ages 1–14, hospitalized for asthma (rate per 10,000) ²	5	*	20.8
CHILDREN WITH SPECIAL NEEDS			
Babies with a birth defect**	22	8.7%	6.6%
Students in Special Education ¹	506	14.3%	14.4%
Children receiving Supplemental Security Income (rate per 1,000) ¹	130	24.6	19.2

¹ As of December 2010.

² Annual rate and number are based on the three-year period 2007–2009 and only for counties with a total number over 20.

³ Family Independence Program.

⁴ State name for the federal Supplemental Nutrition Assistance Program, formerly called "food stamps."

Note: Percentages reflect percent of population unless otherwise noted.

* Sometimes a rate could not be calculated because of low incidence of events or unavailable data.

** Based on three year period 2006-2008.

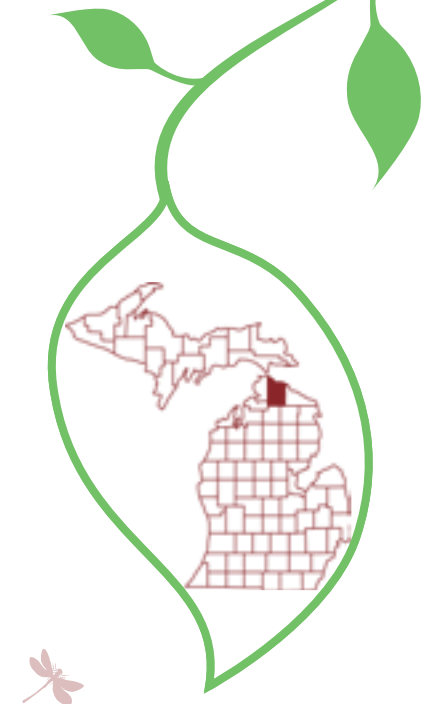
N/A not available.

See Data Notes and Definitions for details.

TRENDS IN CHILD WELL-BEING 2000–2008/09**



	BASE YEAR		CURRENT YEAR		RANK ¹	MI RATE	PERCENT CHANGE IN RATE	
	NUMBER	RATE	NUMBER	RATE			WORSE	BETTER
Economic Security**	<u>2005</u>		<u>2009</u>					
Children in poverty								
• ages 0–17	1,352	23.1%	1,356	26.1%	55	22.2%	13	
• ages 5–17	892	20.1%	888	22.6%	51	20.2%	12	
	<u>2006</u>		<u>2010</u>					
Students receiving free/reduced price school lunches ²	1,859	47.5%	2,037	57.7%	64	46.5%	21	
Child Health	<u>1998–2000</u>		<u>2007–2009</u>					
Less than adequate prenatal care (2008–09)‡	—	—	41	17.6%	2	29.5%		
Low-birthweight babies	22	8.0%	13	5.2%	6 of 81	8.5%		35
Infant mortality (per 1,000)	2	*	1	*	* of 49	7.6		
Child deaths, ages 1–14 (per 100,000)	2	*	0	*	* of 34	17.4		
Adolescence								
Births to teens, ages 15–19 (per 1,000)	33	41.3	26	32.8	40	33.3		21
Teen deaths (per 100,000)	1	*	0	*	* of 39	55.6		
	<u>2007</u>		<u>2010</u>					
High school dropouts**	28	8.1%	22	6.8%	26 of 80	11.1%		16
Abuse/Neglect (per 1,000)	<u>FY2000</u>		<u>FY2010</u>					
Children in investigated families	532	84.9	802	151.9	81	70.1	79	
Confirmed victims	69	11.0	241	45.6	81	13.8	314	
Children in out-of-home care	48	7.7	47	8.9	72 of 76	5.1	16	
Education (not proficient in math)	<u>2003</u>		<u>2010</u>					
Fourth grade (MEAP)	94	34.6%	13	5.5%	19	8.5%		84
Eighth grade (MEAP)	133	44.9%	45	16.9%	25	22.0%		62
	<u>2008</u>		<u>2010</u>					
High school students (MME)	170	54.8%	173	57.9%	73	49.6%	6	



¹ A ranking of 1 means a county has the “best” rate compared to other counties in the state. Unless noted, the ranking is based on 82–83 counties.

² Family income for eligible students is below 185 percent poverty level.

* Sometimes a rate could not be calculated because of low incidence of events or unavailable data.

** Due to changes in the data measures, comparisons between 2000 and the current year could not be made for some indicators.

‡ Due to Michigan’s revised birth certificate, 2008–09 data cannot be compared with those of previous years.

MME – Michigan Merit Exam instead of the MEAP.

Beginning in 2007 Michigan high school students have taken the ACT college entrance exam.

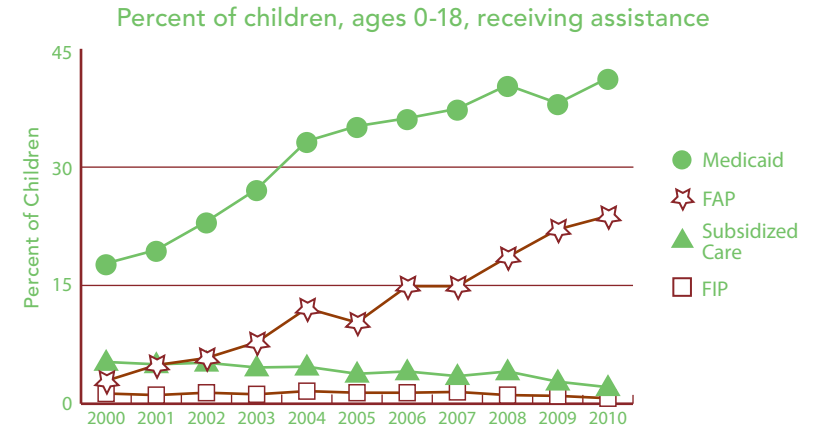
Missing bars indicate no change or a rate could not be calculated; a “0” reflects no change.

Percentage change is calculated with unrounded rates.

BACKGROUND INFORMATION (ALL DATA ARE FOR 2010 UNLESS OTHERWISE NOTED.)



	NUMBER	RATE	MI
FAMILY SUPPORT PROGRAMS			
Children receiving...			
• subsidized child care, ages 0–12 ¹	106	2.1%	3.4%
• FIP cash assistance ^{1,3}	56	0.7%	6.2%
• Food Assistance Program ^{1,4}	1,828	23.8%	30.4%
Children with support owed			
• receiving none (% of those owed)	157	10.5%	29.5%
• receiving less than 70% of amount	689	46.2%	62.6%



Source: Michigan Department of Human Services and Michigan Department of Community Health, Vital Records and Health Data Development Section.



	2000	2010	% CHANGE
POPULATION			
Child population 0–17			
• Ages 0–4	1,946	1,705	-12.4%
• Ages 5–9	2,156	2,033	-5.7%
• Ages 10–14	2,400	2,222	-7.4%
• Ages 15–19	2,201	2,191	-0.5%

	NUMBER	RATE	MI
ACCESS TO HEALTH CARE			
Children insured	7,080	93.8%	94.9%
Children, ages 0–18 insured by...			
• Medicaid ¹	3,173	41.3%	40.7%
• MICHild	169	2.2%	1.2%
Fully immunized toddlers, ages 19–35 months (for the series 4:3:1:3:3:1) ¹	373	72.3%	70.0%
Lead poisoning in children, ages 1–2			
• tested	180	25.6%	36.2%
• poisoned (% of tested)	0	*	0.8%
Children, ages 1–14, hospitalized for asthma (rate per 10,000) ²	5	*	20.8
CHILDREN WITH SPECIAL NEEDS			
Babies with a birth defect**	18	5.1%	6.6%
Students in Special Education ¹	578	11.3%	14.4%
Children receiving Supplemental Security Income (rate per 1,000) ¹	101	13.9	19.2

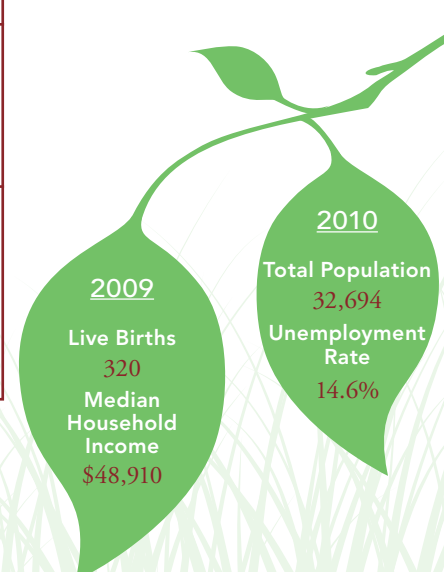
1 As of December 2010.
 2 Annual rate and number are based on the three-year period 2007–2009 and only for counties with a total number over 20.
 3 Family Independence Program.
 4 State name for the federal Supplemental Nutrition Assistance Program, formerly called “food stamps.”

Note: Percentages reflect percent of population unless otherwise noted.
 * Sometimes a rate could not be calculated because of low incidence of events or unavailable data.
 ** Based on three year period 2006–2008.
 N/A not available.
 See Data Notes and Definitions for details.

TRENDS IN CHILD WELL-BEING 2000–2008/09**



	BASE YEAR		CURRENT YEAR		RANK ¹	MI RATE	PERCENT CHANGE IN RATE	
	NUMBER	RATE	NUMBER	RATE			WORSE	BETTER
Economic Security**	<u>2005</u>		<u>2009</u>					
Children in poverty								
• ages 0–17	977	12.7%	1,247	17.4%	17	22.2%	37	
• ages 5–17	651	11.4%	822	15.2%	18	20.2%	33	
	<u>2006</u>		<u>2010</u>					
Students receiving free/reduced price school lunches ²	1,610	29.3%	2,087	40.8%	16	46.5%	39	
Child Health	<u>1998–2000</u>		<u>2007–2009</u>					
Less than adequate prenatal care (2008–09)‡	—	—	62	19.0%	3	29.5%		
Low-birthweight babies	23	6.1%	22	6.5%	18 of 81	8.5%	6	
Infant mortality (per 1,000)	2	6.1	1	*	* of 49	7.6		
Child deaths, ages 1–14 (per 100,000)	1	*	0	*	* of 34	17.4		
Adolescence								
Births to teens, ages 15–19 (per 1,000)	38	36.9	25	22.9	19	33.3		38
Teen deaths (per 100,000)	2	109.3	1	*	* of 39	55.6		
	<u>2007</u>		<u>2010</u>					
High school dropouts**	40	8.9%	27	5.9%	15 of 80	11.1%		33
Abuse/Neglect (per 1,000)	<u>FY2000</u>		<u>FY2010</u>					
Children in investigated families	444	55.7	628	86.4	38	70.1	55	
Confirmed victims	89	11.2	108	14.9	34	13.8	33	
Children in out-of-home care	17	2.1	32	4.4	28	5.1	106	
Education (not proficient in math)	<u>2003</u>		<u>2010</u>					
Fourth grade (MEAP)	91	24.6%	19	5.3%	17	8.5%		79
Eighth grade (MEAP)	166	39.1%	36	9.4%	2	22.0%		76
	<u>2008</u>		<u>2010</u>					
High school students (MME)	172	41.8%	149	39.6%	9	49.6%		5



¹ A ranking of 1 means a county has the “best” rate compared to other counties in the state. Unless noted, the ranking is based on 82–83 counties.

² Family income for eligible students is below 185 percent poverty level.

* Sometimes a rate could not be calculated because of low incidence of events or unavailable data.

** Due to changes in the data measures, comparisons between 2000 and the current year could not be made for some indicators.

‡ Due to Michigan’s revised birth certificate, 2008–09 data cannot be compared with those of previous years.

MME – Michigan Merit Exam instead of the MEAP.

Beginning in 2007 Michigan high school students have taken the ACT college entrance exam.

Missing bars indicate no change or a rate could not be calculated; a “0” reflects no change.

Percentage change is calculated with unrounded rates.